

AGENDA

Meeting: SALISBURY AREA BOARD
Place: South Wilts Grammar School for Girls, Stratford Road, Salisbury SP1 3JJ
Date: Thursday 14 March 2013
Time: 7.00 pm

Representatives from Salisbury City Council
and Laverstock and Ford Parish Council

If you have any requirements that would make your attendance at the meeting easier,
please contact your Democratic Services Officer.

Refreshments and networking opportunities will be available from 6:30pm.

Please direct any enquiries on this Agenda to Lisa Moore (Democratic Services Officer),
on 01722 434560 or email lisa.moore@wiltshire.gov.uk
OR

Marianna Dodd (Salisbury Community Area Manager), on 07919 881174 or email
marianna.dodd@wiltshire.gov.uk

All the papers connected with this meeting are available on the Council's website at
www.wiltshire.gov.uk

Press enquiries to Communications on direct lines (01225) 713114 / 713115.

Wiltshire Councillors

John Brady	Salisbury St Martin's & Cathedral
Richard Clewer (Chairman)	Salisbury St Paul's
Chris Cochrane	Salisbury Fisherton & Bemerton Village
Brian Dalton	Salisbury Harnham
Mary Douglas	Salisbury St Francis & Stratford
Bill Moss (Vice Chairman)	Salisbury St Mark's & Bishopdown
Ricky Rogers	Salisbury Bemerton
Paul Sample	Salisbury St Edmund & Milford

Items to be considered

Time

1 **Welcome and Introductions**

7.00pm

2 **Apologies for Absence**

3 **Minutes** (*Pages 1 - 14*)

To confirm the minutes of the meeting held on 10 January 2013.

4 **Declarations of Interest**

To receive any declarations of disclosable interests or dispensations granted by the Standards Committee.

5 **Chairman's Updates**

The Chairman will give an update on outcomes and actions arising from previous meetings of the Area Board, including:

- Works to Marketplace and New Canal Street
- Brown tourist roadsigns

6 **Current Consultations**

To note that information on the following consultations can be found via the following link:

<http://consult.wiltshire.gov.uk/portal>

Consultation	End Date
LTP3 Other Strategies Consultation	24/05/2013
Review of Wiltshire Housing Allocation Policy	26/04/2013

7 **Update from Representatives** (*Pages 15 - 22*)

7.05pm

To receive updates from representatives of the following partner organisations:

- a) Salisbury City Council
- b) Laverstock and Ford Parish Council
- c) Police
- d) Fire
- e) NHS

8	Update from Salisbury City Community Area Partnership (SCCAP)	7.15pm
	To receive an update from the Community Area Partnership.	
9	Area Board Achievements (Pages 23 - 28)	7.25pm
	Opportunity to look back at the achievements of the Area Board over the last four years, including some feedback from recipients of grant funding.	
10	Proposed development on A36 (Southampton Road)	7.40pm
	To receive a presentation from developers proposing a 65-bed hotel and drive-through restaurant on plot of land between the Tesco car park, and the A36 (Southampton Road), including an opportunity for questions and comments.	
	<i>(It should be noted that this item is being presented to the Area Board <u>for information and consultation only</u>. A planning application is expected to be submitted regarding this site in the near future. The Area Board has no powers to determine planning applications; this authority rests with the Southern Area Planning Committee.)</i>	
11	Salisbury Vision - Update on Maltings	8.05pm
	To receive a presentation from the Salisbury Vision on the Maltings, and a brief update on Churchfields.	
12	Update on Purple Flag	8.40pm
	To receive an update on the actions arising from the Purple Flag Award initiative.	
13	Community Area Transport Group (Pages 29 - 32)	8.50pm
	To receive an update on the work of the Community Area Transport Group, including any recommendations for the Area Board to consider.	
14	Future Meeting Dates, Evaluation and Close (Pages 33 - 34)	8.55pm
	To note the Board's Forward Plan, including details of future agenda items.	
	The date of the next meeting is Thursday 27 June, 7pm at Salisbury Methodist Church, St Edmund Church Street, Salisbury SP1 1EF.	

Future Meeting Dates

Thursday 27 June 2013
7.00pm
Salisbury Methodist Church

Thursday 12 September 2013
7.00pm
South Wilts Grammar School

Thursday 14 November 2013
7.00pm
Alamein Suite, City Hall

Thursday 9 January 2014
7.00pm
Alamein Suite, City Hall

Thursday 13 March 2014
7.00pm
Venue TBC

MINUTES

Meeting: SALISBURY AREA BOARD
Place: Alamein Suite, City Hall, Malthouse Lane, Salisbury SP2 7TU
Date: 10 January 2013
Start Time: 7.00 pm
Finish Time: 9.15 pm

Please direct any enquiries on these minutes to:

James Hazlewood (Senior Democratic Services Officer), Tel: 01722 434250 or (e-mail) james.hazlewood@wiltshire.gov.uk

Papers available on the Council's website at www.wiltshire.gov.uk

In Attendance:

Wiltshire Councillors

Cllr Richard Clewer (Chairman), Cllr Bill Moss (Vice Chairman),
Cllr Christopher Cochrane, Cllr Mary Douglas, Cllr Ricky Rogers and Cllr Paul Sample

Wiltshire Council Officers

Marianna Dodd, Salisbury Community Area Manager
James Hazlewood, Senior Democratic Services Officer
Maxine Gibson, Principal Education Welfare Officer
Tom Smith, Head of Procurement

Town and Parish Councils

Salisbury City Council – Cllr Cheryl Hill, Cllr Ian Tomes, Cllr Joe Rooney, Annie Child
Laverstock and Ford Parish Council – Cllr David Law, Cllr Vic Bussereau

Partners

Wiltshire Police – Inspector Andy Noble
Wiltshire Police and Crime Commissioner – Angus MacPherson
NHS Wiltshire – Tony Barron
“Our Salisbury” – Salisbury City Community Area Partnership (SCCAP) – Debrah Biggs, Tony Thorpe
Salisbury Tenants Panel – Colin Duller

Harnham Neighbourhood Association – John McGarry
South Wilts Mencap – Mike Claydon, John Walsh
Salisbury Journal – Elizabeth Kemble
Salisbury Pubwatch – Amanda Newberry
South Wilts Agenda 21 – Pam Rouquette, Margaret Wilmot

Total in attendance: 76

<u>Agenda Item No.</u>	<u>Summary of Issues Discussed and Decision</u>
1	<p><u>Welcome and Introductions</u></p> <p>The Chairman welcomed everyone to the meeting of the Salisbury Area Board and invited the members of the Board to introduce themselves.</p> <p>The Chairman noted that this year was the 50th Anniversary of the opening of City Hall, commenting that it was in fact a War Memorial.</p>
2	<p><u>Apologies for Absence</u></p> <p>Apologies for absence had been received from:</p> <ul style="list-style-type: none"> • Councillor Brian Dalton • Councillor John Brady • Mike Franklin – Wiltshire Fire and Rescue Service • Stephanie Denovan – Service Director to the Salisbury Area Board
3	<p><u>Minutes</u></p> <p><u>Decision</u> The minutes of the meeting held on 8 November were agreed as a correct record and signed by the Chairman.</p>
4	<p><u>Declarations of Interest</u></p> <p>Councillor Mary Douglas declared a non-pecuniary interest in the following grant applications at item 15, as she was acquainted with the applicants.</p> <ul style="list-style-type: none"> • Friary Transitions Group • St Francis Church • Churches Together • Bemerton Methodist Church <p>Councillor Bill Moss declared a non-pecuniary interest in the grant application from the Salisbury Blind Choir, as he was on the executive of the Wiltshire Blind Association.</p> <p>The Chairman declared that he had been heavily involved with the proposal for recyclable cloth bags and so would refrain from voting on that application.</p> <p>Councillor Chris Cochrane added that he had also been involved in the development of a number of the applications at item 15, but clarified that none of these constituted pecuniary interests.</p>

5	<p><u>Chairman's Updates</u></p> <p>The Chairman reported that the Traffic Regulation Order (TRO) for the proposed works to New Canal Street had been published. Works to move the bus stops and relay the surface, move the taxi rank and install new disabled parking would start towards the end of January.</p> <p>It was noted that survey on the seating and lighting arrangements had recently been undertaken, with over 100 responses. The results would be made available on the Area Board website. It was also noted that a decision would shortly be made on the surface material.</p> <p>Councillor Ricky Rogers referred to the meeting on 1 August 2012, where the Area Board had agreed the outline design, and commented that he understood that the Area Board had agreed to look again at the allocation of disabled parking bays. On the basis, Councillor Rogers MOVED that the Area Board instructs the Cabinet Member not to proceed with the Traffic Regulation Orders relating to disabled parking bays in the guildhall square and surrounding roads, until a review of the proposals by the Salisbury Area Board has taken place. This motion was seconded. The motion was subsequently amended replacing the word "instructs" with "requests"</p> <p>During discussion it was suggested that the process for determining the plans for the Guildhall Square had been long and subject to much consultation and debate, however the time had come for decisions to be taken and for implementation to begin.</p> <p>Upon being put to the vote, the motion was NOT CARRIED.</p> <p>The Chairman fed back on the outcome of the motion at the previous meeting regarding the mini-recycling site at Waitrose. The Cabinet Member had replied that it would only be possible to re-introduce the collection of plastics and cardboard at this site if there was a proven need. Ideas were welcomed as to how the need could be demonstrated.</p> <p>The Chairman also noted that the initial design proposals were now underway for the Maltings. It was requested that the Stanhope designs could be put on the Wiltshire Council website.</p>
6	<p><u>Information items</u></p> <p>The Chairman referred to the presentation on Autism at the previous meeting, commenting that work was on-going to identify some outcomes which could be achieved. Particular focus was on why diagnosis rates were statistically lower in Salisbury than elsewhere, and a briefing note was included in the agenda. As a first step, an application for funding was on the agenda at item 15 to seek funding to produce a leaflet with a view to increasing public awareness of Autism Spectrum Disorders (ASD).</p>

	<p>Angus Macpherson, the Police and Crime Commissioner for Wiltshire and Swindon, introduced himself to the meeting and explained that he and his team would be attending Area Board meetings to allow for direct public involvement in the oversight of policing in the county. Some literature was available on the tables in relation to the draft Police and Crime Plan, and it was hoped that some workshops would be undertaken.</p>
7	<p><u>Update from Representatives</u></p> <p>Cllr Cheryl Hill, Deputy Leader of Salisbury City Council, gave an update on the work of the City Council:</p> <ul style="list-style-type: none"> • The Christmas Lights Switch on had been affected by the appalling weather, with the fireworks being cancelled due to the high winds. These would be kept and used for the 2013 Christmas Lights. However, the band switched on the lights from the Guildhall steps prior to their appearance at The Chapel nightclub, and despite the weather, there had been a good turnout. • Following the success of the Jubilee and Olympic Torch Events, the City Council had agreed to put on another free event at Hudson's Field, this time with the theme "Salisbury through the Ages". It was hoped that this would involve partners across the city and result in a family fun day for the whole community. • Work was due to commence on the Crematorium at the beginning of March, and was now expected to cost £100K more than originally envisaged, due to the Listing of the building. • Work had begun on the refurbishment of the Queen Elizabeth Gardens, although this was now about two weeks behind schedule due to the unusual severe flooding. • Work had been completed on the new older children's playground in the Churchill Gardens. Which would be officially opened in the Spring when the ground would be less waterlogged. • The Council was in the process of agreeing its budget for the next year, with an extensive capital programme, including a new stair lift for the Guildhall to enhance access. • An event was being held on Monday 18 February at 5.00pm in the Guildhall about Becoming a Councillor, with the elections due to be held in May 2013. <p>Cllr David Law of Laverstock and Ford Parish Council reported that the Community Farm in Laverstock had hosted the 3rd Annual Nativity event organised by St Marks Church, with over 500 people attending. Cllr Law also referred to problems in Ford due to the ongoing roadworks and road closure at Broken Cross bridge. The excess traffic was causing significant damage to the verges, which were soft due to the heavy rain.</p>

	<p>The Chairman noted that Inspector Andy Noble, would give the Police update under the following two agenda items. It was noted that apologies had been received from Wiltshire Fire and Rescue.</p> <p>Tony Barron, Chairman of NHS Wiltshire, gave a short update on the Old Manor Hospital site. The Development of the primary care centre had started and was due to be completed on time. In relation to the rest of the site, the marketing was now underway, having been delayed for 12 months to allow Wiltshire Council to develop a business plan to take over the site for use as a close care facility for older people. However, this had not been forthcoming, and so under the rules for disposal of land by a public body, the PCT was now obliged to put the site on the open market. Work was ongoing with Wiltshire Council to ensure that whoever bought the site would be encouraged in extremely strong terms to develop it, at least in part, as a care facility.</p> <p>The Chairman was in agreement that the site should be used for an additional care facility and encouraged anything that could be done to ensure this.</p>
8	<p><u>Safe Places</u></p> <p>Inspector Andy Noble gave a short presentation about the Safe Places scheme, which provided safe havens for vulnerable adults when they were out in the City. Under the scheme, shops and businesses could sign up to the scheme, and display a “safe places” sticker in their window. Vulnerable people who registered for the scheme could choose to have an ICE (in case of emergency) care which enabled staff at the safe place to identify the vulnerable person and to contact someone they know or trust, such as a parent or carer.</p>
9	<p><u>Anti-Social Behaviour at Gainsborough Close</u></p> <p>Inspector Noble also gave an update on reports of anti-social behaviour at Gainsborough Close. A number of cross-agency measures were proposed to address this, including improvements to the lighting, temporary deployment of an additional CCTV camera, and additional security to the communal doors on the flats. In addition, regular community meetings were being held.</p> <p>Councillor Ricky Rogers thanked the police and the housing officers for their work on this, adding that the proposed works to the communal doors and stairways would address most of the problem.</p> <p>In respect of his general update, Andy commented that the crime figures were fairly stable, with a slight reduction (8%) on the same period in the previous year. Burglary was down by 35%, as were anti-social behaviour and criminal damage (10%). However there was a slight increase in violence and theft from motor vehicles, and people were reminded not to leave valuables in cars, even when locked out of sight. Andy also noted that detected crime was up from 24% to 29%.</p>

10	<p><u>Youth Service Update</u></p> <p>Maxine Gibson, (Principal Education Welfare Officer), gave a short update on the provision of Youth Services in Wiltshire. There was a wide range of services provided, which were developed around a needs-led programme of developmental and community activities. The objectives of the service was not just to keep young people engaged and occupied, but also to help them to develop the skills needed to undertake the transition from childhood to adulthood, and to encourage them to become active citizens.</p> <p>The service employed a funding formula to allocate staffing resources across the county, based on a number of factors including population, deprivation and rurality. There were currently no plans to change this structure, which meant that Salisbury currently had one full-time youth worker, and 46 hours of part time youth work.</p> <p>Youth Advisory Groups (YAGs) had recently been established to help shape and develop services from the perspective of young people, and to hold services providers to account. YAGs were linked to the Area Board boundaries, and were chaired by someone under 25, with at least 50% of the membership under the age of 19.</p> <p>The Area Board thanked Maxine for the update.</p>
11	<p><u>Update from Salisbury City Community Area Partnership (SCCAP)</u></p> <p>Debrah Biggs, Chairman of “Our Salisbury” the Salisbury City Community Area Partnership, gave an update on the work of the partnership.</p> <p>The theme groups were continuing to work on the action plans from the Community Plan, and were keen to encourage more people to get involved.</p> <p>On behalf of the Transport Theme Group, Debrah read out a statement entitled “Does it make any sense to exclude the public from consultation on a Salisbury Transport Strategy while asking them to provide the transport related measures for an Air Quality Action Plan for Salisbury?” The full text of the statement is attached as Appendix A to these minutes.</p> <p>The Chairman noted that the Air Quality Group had been set up at the request of the Area Board, and that it seemed that the Transport Strategy was continually being redefined. There was also ongoing work being undertaken, in public, by the Salisbury Vision, to identify what local people wanted and to consider the interchange between buses and the railway station,</p> <p>The Area Board noted and appreciated the offer from SCCAP to take some of these elements forward, and it was proposed and that the Leader of the Council be invited to attend a meeting with Area Board Councillors, the Chairman of SCCAP, the leader of the transport theme group, and a representative from the</p>

	<p>Vision, to look at how a more joined up approach can be taken, and with greater involvement from SCCAP.</p> <p>It was also noted that air quality in Salisbury remained much better than in larger cities, and that the indicators were showing improvements in air quality.</p> <p><u>Decision</u> The Salisbury Area Board resolved to invite the Leader of Wiltshire Council to attend a meeting, as outline above.</p> <p>Debrah also fed back to the Area Board following the Participatory Budgeting event run by SCCAP on behalf of the Area Board on 10 December, details of which were set out in the report at page 27.</p> <p>The Area Board commented on the success of the event, and thanked everyone involved for their hard work in the build up to the event. It was also noted that all unsuccessful applicants had been signposted to other funding opportunities.</p> <p><u>Decision</u> The Salisbury Area Board agreed to ratify the decision of the Participatory Budgeting event run on 10 December by SCCAP, as set out in the report.</p>
12	<p><u>Community Area Transport Group</u></p> <p>The Chairman referred to the recently implemented scheme at Skew Bridge (Junction of Pembroke Road/Roman Road), and commented that the Community Area Transport Group (CATG) would be asked to review this to make sure the new layout was working. The City Council Transport representative would be invited along to this discussion.</p>
13	<p><u>Purchasing policy</u></p> <p>The Chairman commented that this item was on the agenda, following a suggestion that the Area Board should consider whether Council policy should give greater consideration to the environmental credentials of contractors.</p> <p>Tom Smith, Head of Procurement, gave a brief overview of purchasing as part of the wider Procurement function at Wiltshire Council. The Council purchased a wide variety of goods and services, from stationery and fuel to social care placements, cleaning services and construction of new buildings and roads.</p> <p>The purchasing policy encouraged fair, transparent and open competition, with the following aims:</p> <ul style="list-style-type: none"> • Achieving best value • Ensuring the Council has sufficient supplies and services • Work with suppliers to find efficiencies, but not at the expense of quality

	<ul style="list-style-type: none"> • Purchasing sustainably • Complying with EU Procurement Regulations <p>In relation to the suggestion about environmental considerations, Tom explained that work was well underway on a draft Sustainable Commissioning and Procurement Strategy, which sought to develop procurement as a means of promoting economic, social and environmental well-being. This includes measures such as seeking local partners and adopting policies that promoting the health and well-being of contractors' workforces. It was hoped that this would lead to procurement that would achieve benefits for the environment, community, and the economy over the whole length of a contract, or over the lifetime of an item of equipment, and minimise waste and damage to the environment.</p> <p>The Area Board thanked Tom for the presentation, and noted that there were a number of local groups who may be able to feed in to the production of the Sustainable Commissioning Procurement Strategy, including Agenda 21, and Transport 2000. It was suggested that a workshop could be held to allow for community input into the strategy. Tom undertook to raise this with colleagues in the Climate Change Team and feedback to the Area Board.</p>
14	<p><u>Community Asset Transfer - Land adjacent to Studio Theatre</u></p> <p>The Chairman referred to the written report in the agenda, and explained that the Studio Theatre had applied for the Community Asset Transfer of the plot of Council owned land to allow for the expansion of the car park, in view of the increasing popularity of the theatre.</p> <p><u>Decision</u> The Salisbury Area Board approves the application from the Studio Theatre for the transfer of a piece of land to the rear of Studio Theatre, Ashley Road, Salisbury, SP2 7TN, as set out in the report. <i>Reasons For Proposal - This proposal supports and implements Wiltshire Council's Community Asset Transfer Policy.</i></p>
15	<p><u>Community Area Grants</u></p> <p>The Chairman explained that the Area Board did not have sufficient funds remaining in its budget for 2012/13 to fund all applications on the agenda. In view of this, and to avoid penalising those applications who were at the end of the list, the Area Board would hear from all applicants in turn, and then make its decision based on the relative merits of all applications.</p> <p>The Chairman then invited a representative from each of the grant applicants to give a brief overview of their project to the Area Board. After each of the applicants had spoken the Chairman invited questions and discussion, then</p>

asked for a show of hands from those present to reflect public opinion.

After hearing from all applicants, the Chairman proposed to go through and determine whether the Area Board would support each application, however only applications for £1,000 and less would be confirmed at the full amount requested at this stage. The Area Board bid for Lorrywatch was WITHDRAWN due to the thin support from the room, and the fact that the success of the project would rely on volunteers. All other applications were approved, and it was proposed, seconded and AGREED that all applications for £1001 and above would be reduced pro rata in line with the remaining budget. All applications for £1000 or less would receive the full amount.

Decision

The Friary Transitions Group was awarded £350 towards funding a facilitated youth group.

Reason – *The application met the Community Area Grants Criteria 2012/13.*

Decision

Salisbury Quakers (Green Fair) was awarded £870 towards putting on a free event to promote greener living.

Reason – *The application met the Community Area Grants Criteria 2012/13.*

Decision

Visit Wiltshire was awarded £2,693.76 towards a Salisbury Tourism Marketing Campaign.

Reason – *The application met the Community Area Grants Criteria 2012/13.*

Decision

St Francis Church Hall was awarded £4,489.60 towards redeveloping the external of the re-built hall.

Reason – *The application met the Community Area Grants Criteria 2012/13.*

Decision

St Marks' Pre-School was awarded £4,489.60 towards developing the outdoor space in an outdoor learning experience.

Reason – *The application met the Community Area Grants Criteria 2012/13.*

Decision

Salisbury Arts Centre was awarded £4,489.60 towards the Salisbury Odyssey programme.

Reason – *The application met the Community Area Grants Criteria 2012/13.*

Decision

The Trees for St Marks Road Group was awarded £888 towards purchasing and planting trees.

Reason – *The application met the Community Area Grants Criteria 2012/13.*

	<p><u>Decision</u> Churches Together was awarded £1000 towards putting on an Exhibition of Artwork. <u>Reason</u> – <i>The application met the Community Area Grants Criteria 2012/13.</i></p> <p><u>Decision</u> Bemerton Methodist Church was awarded £948 towards a breadmaking project. <u>Reason</u> – <i>The application met the Community Area Grants Criteria 2012/13.</i></p> <p><u>Decision</u> Harnham Schools Travel Group was awarded £750 towards producing a travel leaflet. <u>Reason</u> – <i>The application met the Community Area Grants Criteria 2012/13</i></p> <p><u>Decision</u> Salisbury Blind Choir was awarded £890 towards set up costs. <u>Reason</u> – <i>The application met the Community Area Grants Criteria 2012/13.</i></p> <p><u>Decision</u> Salisbury Area Board agreed to award £3,479.44 towards the Area Board project to purchase and deliver recyclable cloth bags to Salisbury Schools. <u>Reason</u> <i>The project meets Councillor-led project criteria as detailed in the Officer's report attached to the agenda.</i></p> <p><u>Decision</u> Salisbury Area Board agreed to award £326 towards the Area Board project to produce and distribute a flyer on Autism. <u>Reason</u> <i>The project meets Councillor-led project criteria as detailed in the Officer's report attached to the agenda.</i></p>
16	<p><u>Future Meeting Dates, Evaluation and Close</u></p> <p>The Chairman thanked everyone for attending and noted that the next meeting of the Salisbury Area Board would be held on Thursday 14 March 2013, 7pm at South Wilts Grammar School for Girls, Stratford Road, Salisbury SP1 3JJ.</p>
<p><u>Appendix A - Statement from SCCAP Transport Theme Group (item 11 refers)</u></p>	

This page is intentionally left blank

Statement to Area Board 10.1.2013 re Transport

Does it make any sense to exclude the public from consultation on a Salisbury Transport Strategy while asking them to provide the transport related measures for an Air Quality Action Plan for Salisbury?

Both the Salisbury Transport Study Options Assessment Report produced in January 2010 and the Addendum produced in August 2011 indicated that the next step would be a stakeholder consultation, and that further work was required to refine the options and produce a Salisbury Transport Strategy, and this is confirmed in the adopted South Wiltshire Core Strategy. But now the minutes of the November 2012 Area Board meeting tell us that *“information on the Transport Strategy which was available on the Council’s website was quite complicated and technical. A new summary document was being prepared and would be shared shortly with the Councillors, prior to being published online.”*

The document referred to does not appear to have been published online yet, but versions of a “Salisbury Transport Strategy Summary” dated November 2012 have been circulated.

It seems we have now arrived at a Salisbury Transport Strategy without any of the further steps proposed in the Options Assessment reports – no further refinement of the options which had been promised and no public consultation. Furthermore we have a ‘summary’ document but no detailed document giving details of the measures which are summarised.

There are unanswered questions arising from this long drawn out and unsatisfactory process – for instance originally in January 2010 it was stated that 6 buses per hour were needed to serve the new strategic developments around Salisbury, why has this been changed to only 2 buses per hour? Does it make sense to spend £2.5 million on junction improvements to the south of Salisbury when there are now no strategic developments proposed to the south? Why is the city centre pedestrianisation promised in the first Salisbury Transport Plan a decade ago but never delivered not carried forward into the new plan?

With recent proposals such as the Maltings redevelopment and the closure of the bus station there is now even more reason to have a proper Salisbury Transport Strategy which encompasses the whole range of transport measures and infrastructure which are needed across the city, and to listen to what local people have to say about the possible options.

Furthermore the link between the Local Transport Plan including Salisbury’s Transport Strategy and the Air Quality action plan needs to be properly acknowledged. Traffic is the cause of Salisbury’s air quality issues and clearly transport strategies need to provide the strategic solutions. But Wiltshire have so far failed to deliver those parts of the Local Transport Plan which will do most to address air quality issues – Walking, Cycling and Smarter Choices strategies are among those which will allegedly be available for consultation shortly. Rather than working with the Sustainable Transport department to develop the details which might form part of an Air Quality Action plan the Public Health department are asking for members of the public to come forward and suggest measures which can be taken to resolve the air quality problems. SCCAP would be only too happy to work with Wiltshire Council officers and help to gather the public’s views on sustainable solutions to Salisbury transport problems. However these views need to contribute to the transport strategies as well as to the Air Quality action plan. It makes no sense to consider the two areas in isolation and to exclude the public from consultation on a Salisbury Transport Strategy while asking for their views on measures to resolve air quality issues.

Could we have some joined up thinking by Wiltshire Council which will deliver an integrated Transport Strategy and Air Quality Action Plan which incorporate local people’s views and which will help to provide Salisbury with the sustainable transport solutions which will be needed to cope with the growth of the city which is being planned?

Margaret Willmot
Transport Theme Lead, Salisbury City Community Area Partnership

This page is intentionally left blank

**Crime and Community Safety Briefing Paper
Salisbury Community Area Board
14th March 2013**



1. Neighbourhood Policing

Team Sgt: PS Richard Goodman

City Centre Team

Beat Manager – PC Dave Ballard

PCSO – Jennifer Cradock

PCSO – Emma Fisher

PCSO – Matt Katsande

Friary & Southampton Rd

Beat Manager – PC Mike Parrott

PCSO – Matthew Smith

Team Sgt: PS Jenny Bailey-Hobbs

Castle Rd & Bishopdown

Beat Manager – PC Samantha Dutton
PCSO - Nicola Clark

Bemerton Heath

Beat Manager – PC Simon Davies
PCSO – Oliver Royston
PCSO – Gemma McIndoe

St Paul's & Churchfields

Beat Manager – PC Emma Higgins
PCSO – Stephanie Biggs
PCSO – Hannah Milburn

Harnham

Beat Manager – PC Fritz Macaulay
PCSO – Simon Ward

2. NPTs - Current Priorities & Consultation Opportunities:

Up-to-date details about Neighbourhood Policing Teams including team membership, current priorities and forthcoming community consultation events can be found on our Wiltshire Police Website.

□ Visit the new and improved website at: www.wiltshire.police.uk

3. Performance and Other Local Issues

In recent weeks we have had some movement within our team. PC Ian Pedliham, after over 20 years in the city centre, has moved across to Wilton. Dave Ballard moves from Churchfields to cover the City Beat and PC Emma Higgins has joined us from Chippenham to Churchfields. Overall crime remains stable compared to last year with reductions in most areas except violence. Our specific work around Night Time Economy violence within Salisbury continues. During the month of March we have targeted overt & covert work planned at venues linked to the highest volume of alcohol related arrests in the prior year. We have recently closed a priority linked to a group of vehicle crime offenders in Salisbury, following a significant reduction in offending. The Office of the Police & Crime Commissioner will be surveying Wiltshire households to seek your views on crime and community safety.

CRIME & DETECTIONS (Jan 2012 – Dec 2012) compared to previous year

ES Salisbury	Crime				Detections	
	January 2011 - December 2011	January 2012 - December 2012	Volume Change	% Change	January 2011 - December 2011	January 2012 - December 2012
Victim Based Crime	3092	2836	-256	-8%	24%	29%
Domestic Burglary	110	76	-34	-31%	15%	25%
Non Domestic Burglary	290	208	-82	-28%	6%	12%
Vehicle Crime	324	288	-36	-11%	3%	7%
Criminal Damage & Arson	726	640	-86	-12%	18%	25%
Violence Against The Person	494	553	59	12%	52%	49%
ASB Incidents (Year to Date)	2266	1892	-374	-17%		
Wiltshire Police are compared against a group of 8 most similar forces. Wiltshire Police have performed in line with peers and better than average for Victim Based Crime and Domestic Burglary in the previous 12 month period (December 2011 - November 2012).						
* Detections include both Sanction Detections and Local Resolution						

Page 17

Andrew Noble
Inspector
Salisbury & Southern Wiltshire Community Areas

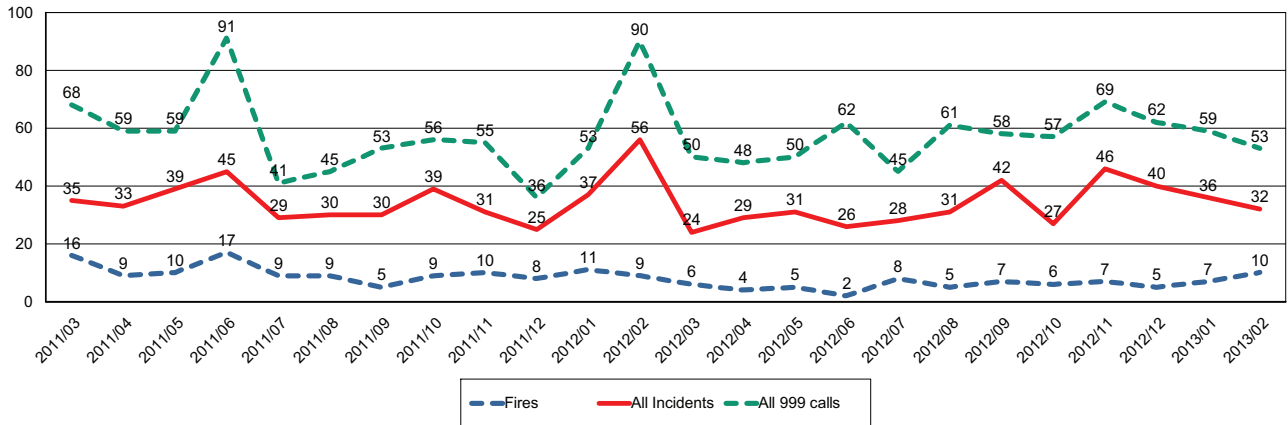
This page is intentionally left blank



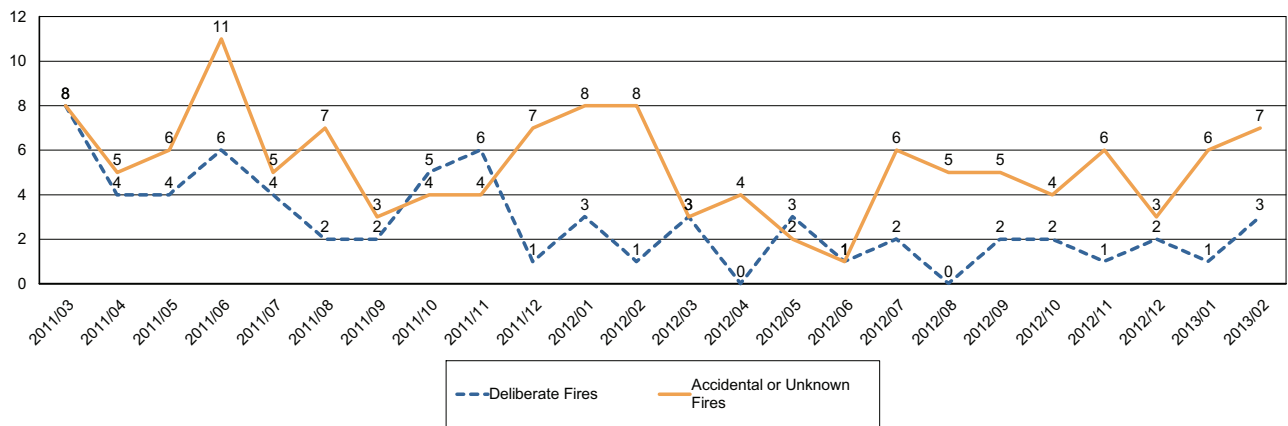
Report for Salisbury Area Board

The following is an update of Fire and Rescue Service activity up to and including February. It has been prepared using the latest information and is subject to change.

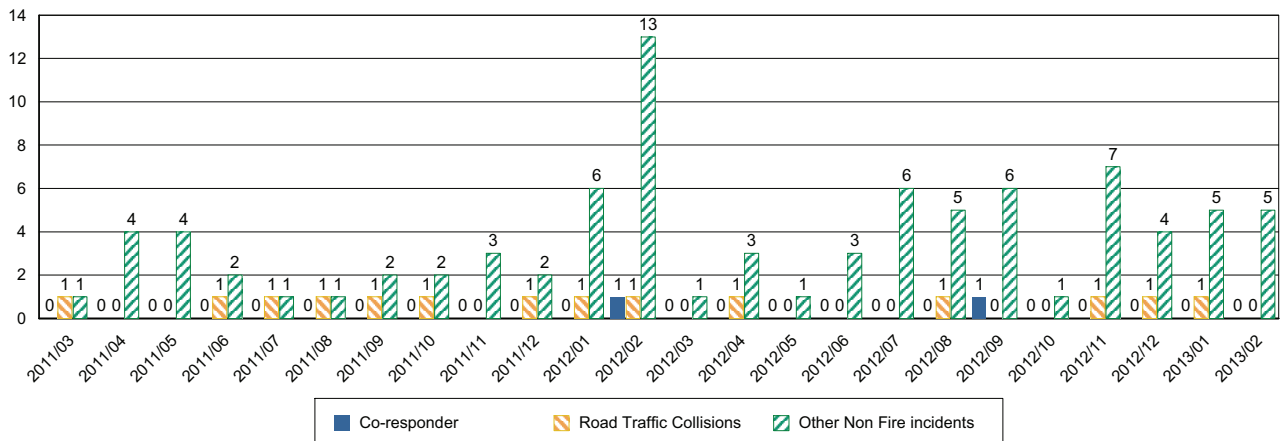
Incidents and Calls



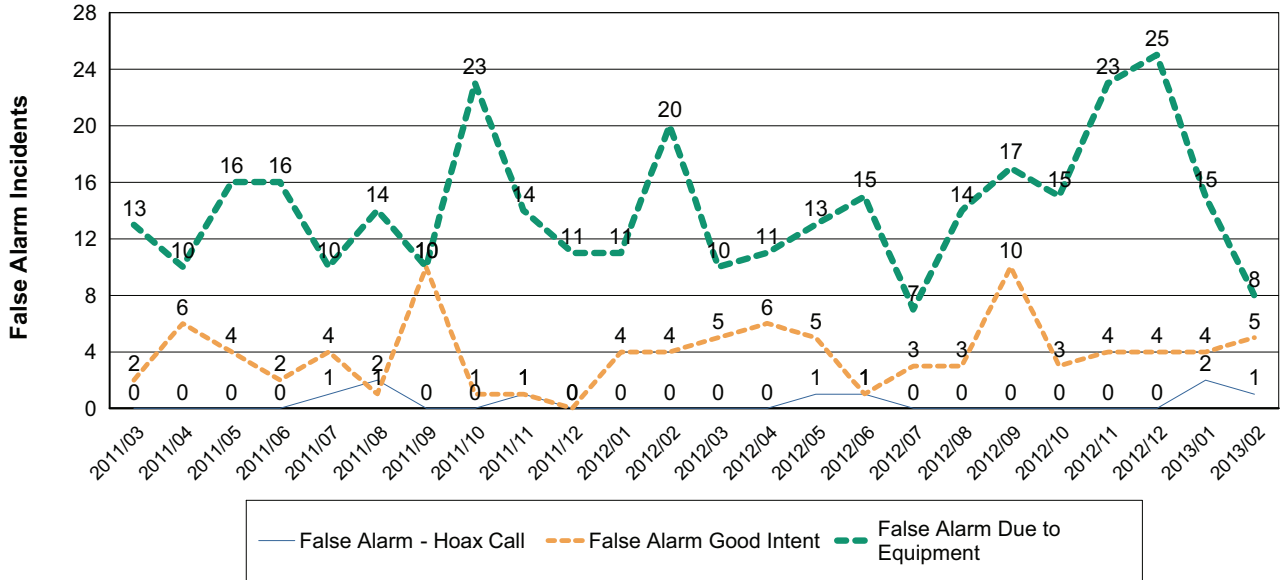
Fires by Cause



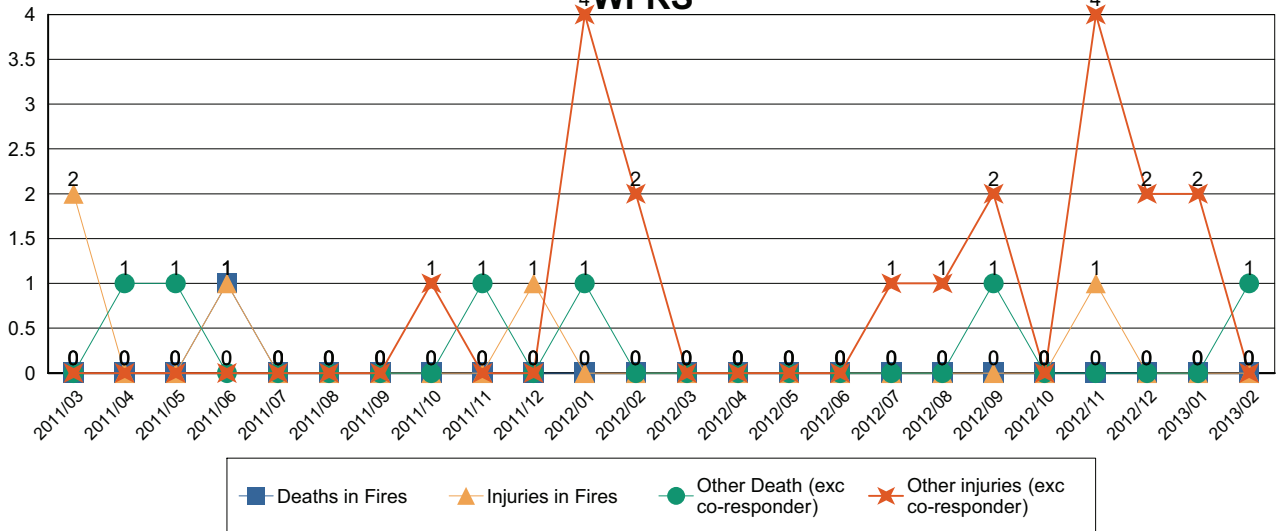
Non-Fire incidents attended by WFRS



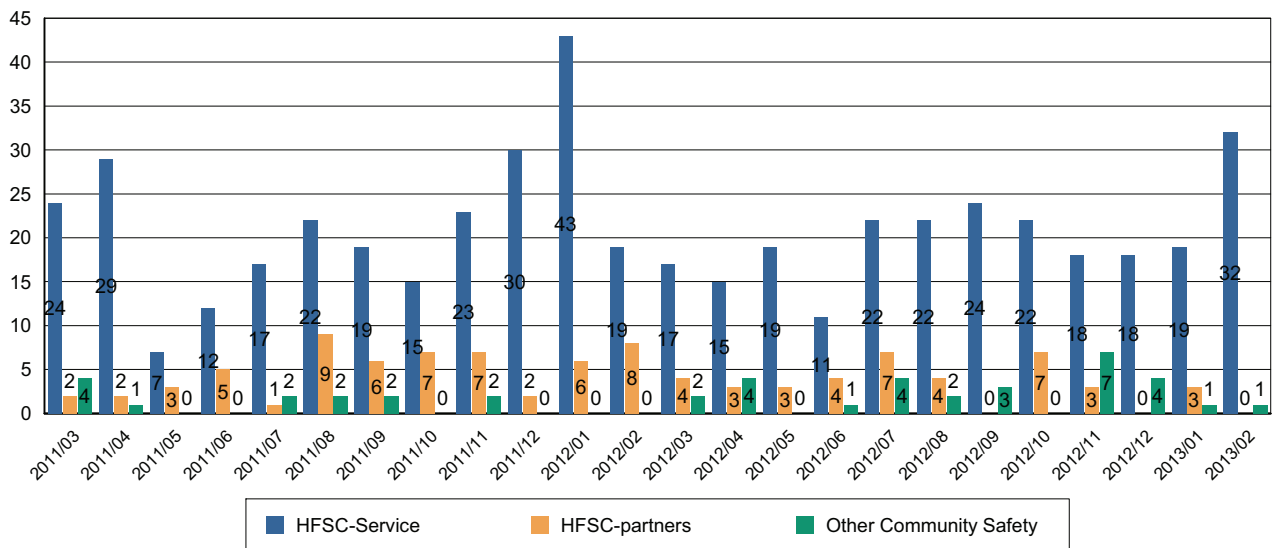
Number of False Alarm Incidents



Death & Injuries in incidents attended by WFRS



Home Fire Safety Checks and other domestic safety



Comments and Interventions overleaf

March 2013 update

This update will be the last from NHS Wiltshire; from April 1st 2013 the commissioning of local health care services will be managed by Wiltshire Clinical Commissioning Group, who will provide the first of their updates to Local Area Boards next month. In the meantime, a message from NHS Wiltshire's Chairman, Tony Barron, as the PCT hands over the baton of responsibility:

In 2006, I took the helm of NHS Wiltshire, a new Primary Care Trust merging three smaller organisations. Today, as we move towards a new model of NHS commissioning, I would like to record some of the ways in which NHS Wiltshire has made a difference.

When the new board first met, we had a £63million debt and a system that provided patchy and uneven care to a widely dispersed population. Some areas were very well served but others, including some of the most deprived parts of Wiltshire, were under-resourced. Unlikely as it may have seemed at the time, we managed to tackle this debt while improving services across the county.

Doing this meant keeping tight control of our purse-strings, driving a hard bargain with those providing the services, and a remorseless focus on getting the best value for every NHS £. Inevitably and very publicly, this meant taking some tough decisions, but also introducing some award-winning innovations in care such as the Neighbourhood Teams and Primary Care Centres. Today, people in Wiltshire benefit from some of the most cutting-edge and innovative community health services, many of which are the envy of other parts of the UK and are now being replicated due to their outstanding success.

In 2013, Wiltshire's NHS has been 'in the black' for four consecutive years. We have new buildings providing top-notch primary care facilities. Thousands more patients are treated by NHS dentists. People can see a GP at a time that suits them, and Wiltshire was rated one of the top six PCTs for sharing health resources fairly in a national study.

Some of our legacy successes are detailed below:

Neighbourhood Teams: Introduced in 2007, Wiltshire's pioneering Neighbourhood Teams have won ringing endorsements from the patients they care for. Caring for patients mainly in their own homes, the teams bring nurses, physiotherapists, occupational therapists and others together to provide seamless, all-round care. Eleven Neighbourhood Teams cover the whole county and provide a range of services including rapid response to patients' urgent needs, rehabilitation services, and nursing and therapy services as part of a planned care package. The model of service provided by Neighbourhood Teams is being replicated across the UK to ensure that patients maintain their independence for longer and enjoy a better quality of life – by cutting down on the need to be admitted to hospital and by helping to reduce delays in patients leaving hospital.

Primary Care Centres: Doctors, nurses, therapists, pharmacists, working together in modern buildings ... all but one of the five developments we envisaged in 2007 are up and running: Malmesbury (opened 2008), Westbury White Horse Health Centre

(opened 2012), Salisbury (new replacement surgery at Avon Approach, and Primary Care development at Old Manor underway), Trowbridge (new replacement surgery development underway, hospital refurbished). Progress on the Devizes Primary Care Centre is far less advanced. It has been difficult to find a site that everyone can agree on and which is affordable, but the CCG will continue to work to a successful conclusion.

Dentistry: A huge turn-round in access to NHS dentistry has been one of NHS Wiltshire's biggest achievements. Consistently number one on the 'wish list' expressed by Wiltshire people at our regular Stakeholder Assemblies, access to an NHS dentist has gone up by a third in the lifetime of NHS Wiltshire. Thanks to an investment of £3.1m, NHS Wiltshire expanded dentistry overall, but also invested in measures to shorten waiting times for orthodontic treatment and a highly successful programme to improve the oral health of under-fives, setting a foundation for a lifetime of healthy teeth.

Stroke: Wiltshire is one of the country's top performers in the care and treatment of people who have had a stroke, according to the CQC in 2011.

Cancer: People diagnosed with cancer in Wiltshire do better than the national average, according to the ONS figures. Better screening services and encouraging a healthier lifestyle are the two prongs of the county's Cancer Reform Strategy.

Cleaner hospitals: Wiltshire Community Health Service was commended by the CQC for its effectiveness in tackling hospital-acquired infections (figures produced prior to management of WCHS transferring to Great Western Hospitals NHS Foundation Trust).

Stop smoking: Wiltshire's Stop Smoking Service has consistently smashed through its targets, helping thousands of smokers to quit.

These and many more success stories make me proud of what we've done at NHS Wiltshire. I'd like to thank the extraordinary team of people who have worked so hard to make this happen, and send Wiltshire CCG the very best wishes for continued success as the National Health Service moves towards a new era of delivering health care.

Tony Barron
Chair, NHS Wiltshire
March 2013

The next PCT Board Meeting will be held on **Wednesday 13th March** – venue and time to be confirmed – please refer to the NHS Wiltshire website: www.wiltshire.nhs.uk
Members of the public are welcome to attend. Papers are published a week before the meeting on or on request from Stacey Saunders, NHS Wiltshire, email: stacey.saunders@wiltshire.nhs.uk

Report for Salisbury Area Board

New Extension to Bemerton Heath Centre Project 2012

Background

1. In May 2010 the Bemerton Heath Centre submitted a bid for grant funding of £129,035 to build an extension to the existing building at 58-60 Pinewood Way, Bemerton Heath, a facility belonging to Salisbury City Council. The bid was prepared for the Performance Reward Grant Scheme (PRGS) administered by Wiltshire Council and partners. Before the bid could be considered by the Performance Reward Grant Panel it had to receive the approval of the Salisbury Area Board which gave its support for the project in December 2010.
2. The rationale behind the bid was that the Bemerton Heath Centre, which had already been recognised as a successful project in one of the most socially deprived areas in Wiltshire, was limited in the scope and scale of activities that it provided for the community. The existing facility was unable to meet the demands placed upon it; some of the regular activities were difficult to provide, for example; a weekly youth club for 50 children aged 7-12 years. It was considered that a suitable extension of 100 square metres would provide the space required to enable the paid and volunteer staff of the Centre to deliver existing activities on a larger scale, introduce many new activities and services and encourage external agencies to use the Centre for the benefit of the community.



The Centre laid out for a meeting



Youth Club Ages 7-12

3. Building work commenced in May 2011 using a local architect and a local builder and was completed 5 days ahead of schedule in September 2011. The new enhanced Bemerton Heath Centre was officially opened by the Mayor of Salisbury, Councillor John Abbott JP in the presence of the Leader of Wiltshire Council; Councillor Jane Scott OBE, on 10 October 2011 – which coincidentally was the eleventh anniversary of the official opening of the original Bemerton Heath Neighbourhood Centre.



May 2011



September 2011

Outcomes

4. The intended outcome of the project was to;

- Increase the use of the Centre
- Increase partnership working
- Increase use of the Centre by external organisations

with targets of a **25% increase** in the number of people using the Centre and a **20% increase** in the number of groups and agencies delivering regular drop-in services from the Centre.

5. As at the date of this report and with another 2 months to run before the end of the reporting year, the number of people who were recorded as using the Centre is 5,965.

This already represents a **15.24% increase** on the previous whole year 2011/12 and the projected total at the end of March 2013 indicates an overall increase of **38.31%** (target 25%) on the year 2011/12.

6. Partnership working has increased substantially and, in particular, we are now working with Wiltshire Council and other partners on several projects including the Anti Social Behaviour Reduction panel and Youth Provision panel. Our partnership working with Sarum Academy has increased with joint activities planned for summer 2013 and the Academy providing pupils from year 7 to assist our volunteers to deliver the senior citizens' Luncheon Club.

7. A significant increase in usage has come from the number of external agencies who have used the Centre since April 2012. Not only has there been an increase in the number of agencies who provide regular drop-in services, but many organisations have come forward to use the new extension for; delivering services and activities to the community, training, meetings, consultations with the community and private commercial bookings. Currently the Centre has 10 agencies and organisations delivering regular drop in services for the community, an **increase of 233%** (target 20%) on the previous year. Some of the organisations who have taken advantage of the new space are listed at Annex A to this report.



Wiltshire Money



Salisbury City Council Civic Day

8. One of the most gratifying aspects of increased usage has been the emergence of the community using the Centre for their own purposes. In particular, children's birthday parties at weekends are becoming increasingly popular. A typical party will see approximately 10 adults and up to 30 children using the Centre for 3 hours. Once a child attends a party in the new extension they want "their party" here too! Since March 2012, 24 families held their children's birthday parties in the Centre.
9. **Salisbury City Council Civic Day**- The outstanding event for this year was undoubtedly the Civic Day hosted by our Mayor, Councillor John Collier. The event saw approximately 70 Mayors and other civic dignitaries seated in an informal setting in the new extension for a presentation on Bemerton Heath followed by afternoon tea. It was the first time that the Centre could host an event of this magnitude and the feedback from the civic party was unanimous in its praise of the Centre.

Financial Income

10. The Bemerton Heath Centre has a variable hire pricing policy. It was the intention to raise the usage of the Centre in the first year of the new extension and our charges reflected this. Charges range from £nil for community and voluntary groups using the Centre to deliver free services to the community, to £150 per 4 hour session for bookings by commercial organisations. The Centre is therefore very competitively priced and the hire charges will be reviewed in March 2013. The pricing policy is shown on our website at www.bemertonheathnc.org.uk. Although we have intentionally kept the charges at a very competitive rate, the gross income from hire this financial year is currently in excess of £6,200, an **increase of 452%** on the previous year.
11. The income raised by the hire of the centre goes back into providing activities and events within the centre.

Customer Satisfaction

12. The Centre encourages users to evaluate the service and facilities offered by the Centre and used by them. Evaluating 7 aspects of the Centre and grading from 'poor' to 'very good', 73% of users graded the Centre as 'very good' with 27%

grading 'good'. There were no 'poor' or 'satisfactory' gradings. There is obviously room for improvement which we will strive to attain in the coming year!

Summary

13. In summary, the Bemerton Heath Centre has had a good year, seeing increases in just about all aspects of its services. Increased usage, delivery of services and income from hire have seen dramatic rises, which is exactly what the Centre set out to achieve when submitting the bid for the grant funding through the Salisbury Area Board. The community of Bemerton Heath, Salisbury parish and beyond are the beneficiaries and the Centre would like to extend its gratitude to Salisbury Area Board and the Performance Reward Grant Panel, administered by Wiltshire Council, for supporting and approving the funding that was crucial to the success of this project.

Edward Callaghan

Bemerton Heath Centre Manager

Feb 2013



ANNEX A TO BEMERTON HEATH CENTRE REPORT FOR SALISBURY AREA BOARD
DATED 31 JANUARY 2013

Agencies Operating Regular Drop-In Sessions at BHC:

National Careers Service	Advice for age 19yrs+ on training and work opportunities
Learning Curve Work Clubs	Advice and practical assistance to get people into work
Community 4	Advice on housing matters
Wiltshire Police	Community drop in surgery
SPLITZ	Support for families, lone parents, individuals and children
NHS	Stop smoking campaign
South Wilts Credit Union	Financial services to the community
Wilts Race Equality Council	Ethnic minorities advisory service
Cranstoun DIP	Drug intervention programme
Salisbury Trust for The Homeless	Advice and assistance for homeless and potentially homeless

Agencies and Organisations Providing Services To The Community:

Wilts Council Family Learning	Learning activities for families with young children
Wilts Council Housing	Participation consultation with tenants
Salisbury Museum	Holiday times Arts and Crafts sessions for families
Community Health Awareness Team (CHAT)	Monthly health awareness meetings for the community
Salisbury Playhouse	Arts and Crafts and Dance activities for older people
Daybreak	Charity funded by Wilts Council to provide family group conferences (FGC). Several FGCs held.
NHS Stoptober	National targeted no smoking campaign
Plain Fit	Christian charity providing keep fit classes for the Community
SPICE	Community consultation and information on Time Credits for volunteers
Wiltshire College	One to One tuition for young students having difficulties at school

Other Major Agencies and Organisations:

Wiltshire Money	Presentation to agencies on Welfare Reforms
Homes Caring for Autism	Meetings for staff/recruiting
Wilts Council Young People's Provision	Community consultation and meetings
Wilts Council Planners	Meeting for Planning department
Radian Disability Forum	Housing association meetings
Wilts Citizens Advice Bureau	Meetings for county wide delegates
Pegasus/Persimmon	Public consultation on Fugglestone Red development
Taylor Wimpey	Public consultation on Pembroke Park development

BBC Crimewatch	Programme on Street Watch
Students' Disco	Hosted disco for 70 French students aged 13-16 years
ASK (Advice and Services for Kids)	Charity meeting
Carers' Day	Multi agency presentation/drop in for carers
Playhouse/Alzheimer's Society/ Salisbury Festival/Wilts Council	Partnership activities for Senior Citizens
Sunfish	Commercial copywriters
Access Training	Training for the education sector
South Wilts Credit Union	Training and AGM
Wilts Council Democratic Services	Police and Crime Commissioner election polling station

WILTSHIRE COUNCIL

ITEM xx

**SALISBURY AREA BOARD
(14 March, 2013)**

Community Area Transport Group (CATG) Update – 2012/13/14

1. Purpose of the Report

- To update the Board on the progress of the CATG Schemes.
- To request the Board to ratify specific recommendations from CATG.

2. CATG schemes considered in 2012/2013

2.1 Salisbury CATG had a budget of £14,758 discretionary funding for the financial year 2012/13 which has been fully allocated, see Table 1 below.

2.2 During 2012/13, CATG recommended and the Area Board approved the following small scale transport schemes:

Table 1

Street	Scheme Description	Budget requirement	Status
Stratford Road	Footway by primary school – Prebendal House	Topo survey £983 + £7k	On hold
Cherry Orchard Lane	Footway improvement by railway bridge	£1k	Ongoing
Various city locations	Dropped kerbs	At least £5k	Ongoing
Stratford Road	Feasibility Study for a Pedestrian Crossing outside Stratford Court Residential Home	£1k	Scheme on hold pending implem of residents parking scheme.

2.3 New information has emerged regarding the Prebendal House, Stratford Road scheme since the Area Board approval of the £7k funding. Since this approval, Cllr Mary Douglas confirmed to CATG that following discussions with Stratford School it had come to light that a footpath scheme adjacent to Orchard House would be of equal benefit to a footpath scheme outside Prebendal House. In light of these comments, Cllr Douglas was carrying out a

consultation with residents to determine which scheme had greatest support. The results of this consultation would inform which scheme was taken forward to construction.

3. CATG schemes to be considered in 2013/14

3.1 As the CATG budget for 2013/14 had not been confirmed at the time of publishing this report and forthcoming councillor elections on 2 May, 2013 preclude the Area Board from making budgetary decisions at this meeting, no recommendations for funding schemes out of the 2013/14 CATG allocation are included in this report.

3.2 However, at the CATG meeting held on 21 February, 2013 discussions focused on making recommendations to the Area Board for bids to the substantive pot of funding of £100k as bids are required to be submitted in the near future, prior to the next Area Board meeting.

3.3 Two potential bids to the substantive scheme were proposed for recommendation:

- Junction at Roman Road/Pembroke Road where concerns have been raised by the public and councillors with a solution sought via CATG. The outcome of a discussion at CATG culminated in broad support to a layby construction by the shop at the Roman Road/Pembroke Road junction and to make a recommendation to the Area Board to submit a bid to the substantive scheme to support scheme costs.
- Footpath works in Stratford Road is subject to resident consultation currently underway which will inform whether a scheme is progressed outside Prebendal House or Orchard House. CATG confirmed support of the allocation of £7k to either project. However, should the Orchard House scheme be preferred by residents, CATG recommended that a substantive bid be submitted to cover additional costs in support of the transfer of £7k to this scheme.

Street	Scheme Description	Budget requirement	Status
Junction at Roman/Pembroke Road	To construct a layby by the shop on the corner of Roman Road	To be advised	Recommendation to bid to the substantive scheme
Stratford Road	Footpath works	To be advised	£7k (+ bid to substantive scheme if appropriate)

4. Recommendations

The Board is asked to approve the following CATG recommendations to:

- 1) Approve the allocation of £7k towards footpath works on Stratford Road. The location is dependent on the outcome of the consultation of residents
- 2) Submit bids to the Highways substantive scheme to support:

- Roman Road/Pembroke Road Junction - Layby construction

And, dependent on the outcome of the residents' consultation

- Footpath works adjacent to Orchard House if preferred by local residents.

Nb CATG Minutes can be located on the Salisbury Area Board website at

<http://www.wiltshire.gov.uk/council/areaboards/salisburyareaboard.htm>

Report Author: Marianna Dodd, Salisbury Community Area Manager

Tel No: 01722 434696

E-Mail: Marianna.dodd@wiltshire.gov.uk

This page is intentionally left blank

SALISBURY AREA BOARD Forward Plan

Please note: This is a working document which is subject to change due to availability of relevant officers/partners and relevant timescales.

Date	Location	Possible Area Board Agenda Items	Cabinet Member Attending	Other items/events (provisional)
27 June 2013	Salisbury Methodist Church, St Edmund Church Street, Salisbury SP1 1EF	<ul style="list-style-type: none"> Election of Chairman and Vice-Chairman Reconstitution of Sub groups – Community Area Transport Group and Shadow Community Operations Board. Appointments to Outside Bodies <p>Standard items including Updates and Community Area Grants</p>	TBC	
12 Sept 2013	South Wilts Grammar School for Girls, Stratford Rd, Salisbury SP1 3JJ	<ul style="list-style-type: none"> <p>Standard items including Updates and Community Area Grants</p>	TBC	

Community Area Manager: Marianna Dodd (marianna.dodd@wiltshire.gov.uk)
 Democratic Services Officer: Lisa Moore (lisa.moore@wiltshire.gov.uk)
 Service Director: Stephanie Denovan (stephanie.denovan@wiltshire.gov.uk)

Updated: 5 February 2013

This page is intentionally left blank